

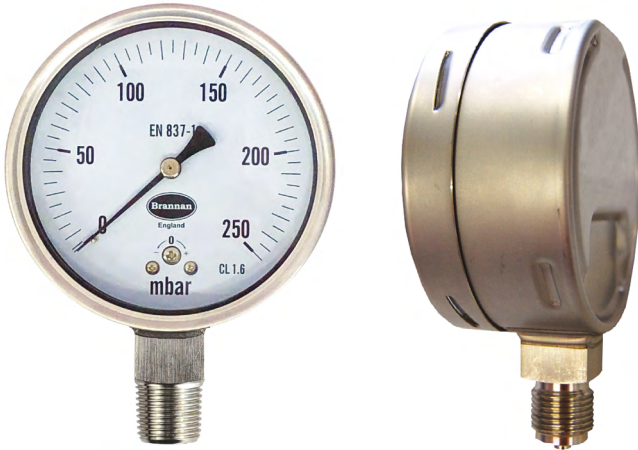
Product data sheet

✉ sales@brannan.co.uk

☎ +44 (0)1946 816600

🌐 brannan.co.uk

CAP040 - STAINLESS STEEL CAPSULE GAUGE



Product features:

- Low pressure capsule gauge
- SS 316 or brass wetted parts
- Ingress protection IP67/IP65
- Micro adjustable pointer
- Glycerine filling available
- **Brannan** quality and accuracy
- For harsh and corrosive environments and pressure media

Applications:

- Heating, ventilation, air-conditioning
- Pulp and paper industry
- Pumps, compressors, hydraulic presses
- Pneumatics
- Outdoor installations
- Food and beverage industry
- Machine and apparatus construction
- High humidity installations
- Hydraulics

Standard product specifications:

Dial diameters	63mm, 100mm & 150mm
Design	BS EN 837 - 3
Accuracy class	63mm: 2.5% / 100mm & 160mm: 1.6%
Ranges	0 to 25 mbar through to 0 to 600 mbar & kPa
Case	Stainless steel 304
Process connection	1/8", 1/4", 3/8" & 1/2" BSP/NPT/BSPT (others available on request)
Connection orientation	Bottom & centre back
Connection material	Stainless steel 316 (laser welded to case) or brass
Bezel	Stainless steel 304 bayonet bezel
Measuring principle	Capsule, stainless steel 316 or brass
Movement	Stainless steel 304
Window	Tempered safety glass (laminated safety glass optional)
Pointer	Black aluminium and micro adjustable pointer
Filling	Dry or glycerine
Working pressure	Steady: 75% full scale range Fluctuating: 60% full scale range Short time: full scale range
Operating temperature	Ambient: silicone/dry: -40 to +60°C, glycerine: -20 to +60°C Medium: silicone/dry: -40 to +100°C, glycerine: -20 to +60°C
Storage temperature	-40 to +60°C
Temperature effect	When temperature of the pressure element deviates from reference temperature of 20°C the maximum additional error is +/-0.6 per 10°C of the span rising and falling
Ingress protection	Stainless steel connection: IP 67 / brass connection: IP65
Calibration	UKAS certification, certificate traceable to recognised national standard or statement of conformity, if required

Product data sheet

Product numbers:

All CAP40 dials are ordered to specific customer specifications. Please use below matrix to create your unique ordering product reference, using the values in bold.

Make	Model	Dial diameter	Ranges	Units	Wetted parts	Connection size	Connection orientation	Filling	Extras
Brannan (BRN)	CAP040 (CAP40)	63mm ₁ (63) 100mm (100) 150mm (150)	0 to 25 Mbar (0+25) 0 to 2.5 kPa (0+2.5) through to 0 to 600 Mbar (0+600) 0 to 60 kPa (0+60)	mbar only (M) kPa only (K) Psi only (P) mbar outer (black) / psi inner (red) (MP) Psi outer (red) / mbar inner (black) (PM) kPa outer (black) / psi inner (red) (KP) Psi outer (red) / kPa inner (black) (PK)	SS 316 (SS316) Brass* (BRS)	1/8" BSP ₁ (1) 1/8" NPT ₁ (2) 1/4" BSP ₁ (3) 1/4" NPT ₁ (4) 3/8" BSP ₂ (5) 3/8" NPT ₂ (6) 1/2" BSP ₂ (7) 1/2" NPT ₂ (8) 1/8" BSPT ₁ (9) 1/4" BSPT ₁ (10) 3/8" BSPT ₂ (11) 1/2" BSPT ₂ (12)	Bottom (BO) Centre back (CB)	Dry - no filling (D) Glycerine ₁ (G)	Laminated safety glass window (LG) Front flange (FF) Back flange (BF) NB. When more than one extra is required, please separate each code with a hyphen when building your product reference
		1. Not available with SS316 wetted parts.	NB. Equivalent vacuum ranges also available	NB. Other units available on request	* IP65. No laser welding connection to case	1. 63mm only 2. 100mm & 150mm only NB. Others available on request		1. Only available above 100 mbar	

Order example:

Make	Model	Dial diameter	Ranges	Units	Wetted parts	Connection size	Connection orientation	Filling	Extras
BRN	CAP40	100	0+25	M	SS316	7	BO	D	LG-FF

Product reference: BRNCAP40/100/0+25/M/SS316/7/BO/D/LG-FF