

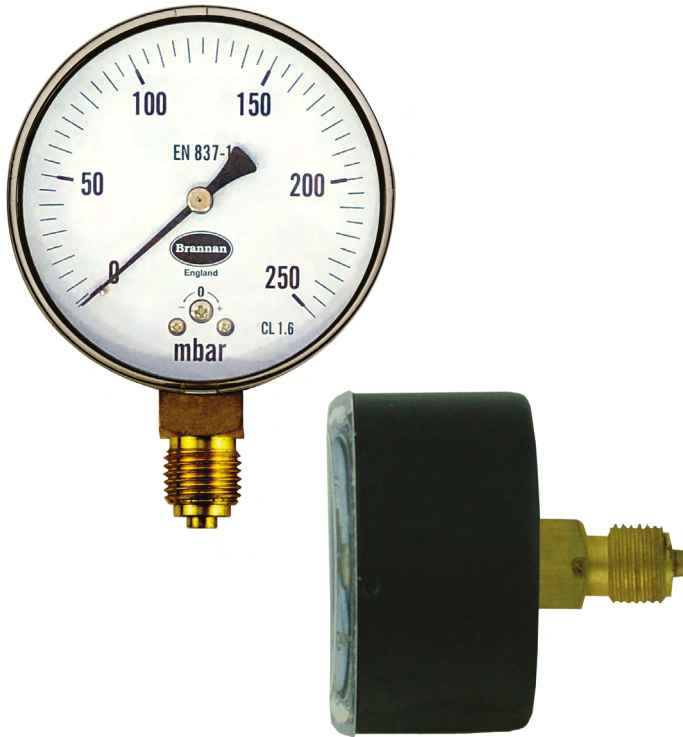
Product data sheet

✉ sales@brannan.co.uk

☎ +44 (0)1946 816600

🌐 brannan.co.uk

CAP010 - BLACK STEEL CAPSULE GAUGE



Product features:

- Low pressure capsule gauge
- Low price commercial gauge
- **Brannan** quality and accuracy
- For dry indoor installations
- Wide range of associated accessories available
- UKAS calibration available

Applications:

- Heating, ventilation, air-conditioning
- Plumbing
- Compressors
- Air filters
- Pneumatics

Standard product specifications:

Dial diameters	63mm & 100mm
Design	BS EN 837 - 3
Accuracy class	63mm: 2.5% / 100mm: 1.6%
Ranges	0 to 25 mbar through to 0 to 600 mbar
Case	Black steel
Bezel	Black steel (100mm only)
Process connection	1/8", 1/4", 3/8" & 1/2" BSP/NPT/BSPT (others available on request)
Connection orientation	Bottom, centre back
Connection material	Brass
Measuring principle	Capsule, brass
Movement	Cu-Alloy
Window	63mm: polycarbonate, snap fit / 100mm: glass
Pointer	Black aluminium
Filling	Dry
Working pressure	Steady: 75% full scale range Fluctuating: 60% full scale range Short time: full scale range
Operating temperature	Ambient: -20 to +60°C Medium: -20 to +60°C
Storage temperature	-40 to +60°C
Temperature effect	When temperature of the pressure element deviates from reference temperature of 20°C the maximum additional error is +/-0.6% per 10°C of the span rising and falling
Protection	IP 43 (BS EN 60529:1992)
Calibration	UKAS certification, certificate traceable to recognised national standard or statement of conformity, if required

Product data sheet

Product numbers:

All CAP10 dials are ordered to specific customer specifications. Please use below matrix to create your unique ordering product reference, using the values in bold.

Make	Model	Dial diameter	Range	Units	Connection size	Connection orientation	Extras
Brannan (BRN)	CAP010 (CAP10)	63mm (63)	0 to 25 Mbar (0+25)	mbar only (M)	1/8" BSP ₁ (1) 1/8" NPT ₁ (2)	Bottom (BO)	Front flange (FF)
		100mm (100)	0 to 2.5 kPa (0+2.5)	kPa only (K)	1/4" BSP (3) 1/4" NPT (4)	Centre back (CB)	Back flange (BF)
			through to	Psi only (P)	3/8" BSP ₂ (5) 3/8" NPT ₂ (6)		
			0 to 600 Mbar (0+600)	mbar outer (black) / psi inner (red) (MP)	1/2" BSP ₂ (7) 1/2" NPT ₂ (8)		
			0 to 60 kPa (0+60)	Psi outer (red) / mbar inner (black) (PM)	1/8" BSPT ₁ (9) 1/4" BSPT (10) 3/8" BSPT ₂ (11) 1/2" BSPT ₂ (12)		
		kPa outer (black) / psi inner (red) (KP)					
			Psi outer (red) / kPa inner (black) (PK)				
			NB. Equivalent vacuum ranges also available	NB. Other units available on request	1. 63mm only 2. 100mm only NB. others available on request		NB. Flange for 100mm only. When more than one extra is required, please separate each code with a hyphen when building your product reference

Order example:

Make	Model	Dial diameter	Range	Units	Connection size	Connection orientation	Extras
BRN	CAP10	100	0+25	M	4	BO	

Product reference: BRNCAP10/100/0+25/M/4/BO

Calibration product numbers:

Calibration	No of points	Product number
UKAS	5pt	49/075/0
Traceable to National Standards	5pt	49/060/0

Other calibration types available on request