

Product data sheet

✉ sales@brannan.co.uk

☎ +44 (0)1946 816600

🌐 brannan.co.uk

DIGITAL VETERINARY THERMOMETER

Easy to use battery operated electronic thermometer with chart giving Hobday's specification (the normal body temperature for a variety of animals).

Product features:

- Compact, accurate and durable
- Large scale integration device
- Non hazardous
- Complete with battery, instructions and Hobday chart

Product specifications:

Temperature range:	32°C to 42°C
Ingress protection:	IP22
Accuracy:	+/-0.1°C between 35.5°C and 42°C, otherwise +/-0.2°C
Resolution:	0.1°C
Approx response time*:	Approx 60 seconds
Expected lifespan:	Approx 5 years
Battery:	1 x LR41 or equivalent (included)
Approx battery life:	100 hours continuous use (2+ years when idle)
Storage temperature:	-25°C to +55°C / <95% RH
Operating temperature:	+5°C to +35°C / <80% RH
CE & RoHS/WEEE:	Compliant
Hazard information (SDS):	See brannan.co.uk for information
LCD dimensions:	7mm x 20mm
Product dimensions:	Net: 133mm x 24mm x 14mm Gross: 142mm x 41mm x 20mm
Product weight:	Net: 13.5g (including batteries and instruction sheet)
Gross weight:	Box: 17g Gross: 30.5g (including 12g protective tube)



CE

Description	Barcode	Product No
Digital veterinary thermometer	5 011405 110152	11/015/2

View me on
the website



Product data sheet

✉ sales@brannan.co.uk

☎ +44 (0)1946 816600

🌐 brannan.co.uk

Hobday's Specification

Man	Cat	Horse	Dog	Cow	Pig	Sheep	Fowl
37°C	38°C	38°C	38.8°C	38.9°C	39.5°C	40°C	41.7°C

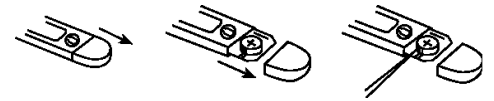
Instructions for use:

1. Press the on/off button. The display will read 188.8°C
2. Release the power switch and the display will show L°C with °C flashing.
3. Position the probe.
4. Once the degree sign on the display has stopped flashing (usually within 30 to 60 seconds), the LCD will show the correct temperature.
The temperature reading will not change after the °C stops flashing. An alarm signal will sound for approximately 10 seconds when the °C stops flashing.
5. Remove the thermometer, being careful to avoid pressing the on/off button. The temperature may be read before removal because the display will retain the stabilized temperature reading.
6. The unit will automatically turn off in 8-10 minutes. However, to prolong battery life, press the power switch once the temperature had been noted to turn off thermometer.

Battery replacement:

When the battery is almost exhausted, the "■" symbol will appear in the display window.

1. Remove battery cover as shown in illustration.
2. Use toothpick or insulated probe to remove battery. Avoid using any sharp metal object for this operation.
3. Insert new battery with positive side facing upwards.
4. Replace and close the cover securely.



Warning: Do not attempt to recharge the battery. Do not dispose of battery in or near fire as it may explode.
Swallowing a button battery may be fatal.

Precaution

1. Do not drop - unit is not shock proof
2. Do not soak the display in water - only the probe is waterproof
3. Do not boil - clean the unit by wiping with a dry cloth and sterilize the probe with ethyl rubbing alcohol
4. Do not allow the unit to come into contact with thinners or chemical solvents.
5. Do not store in direct sunlight or at high temperature
6. Do not bend the unit
7. Do not attempt to disassemble the unit except to replace the battery.

