

Product data sheet

✉ sales@brannan.co.uk

☎ +44 (0)1946 816600

🌐 brannan.co.uk

BT040 - STAINLESS STEEL BIMETAL THERMOMETERS (CLASS 1)



Product features:

- Thermometer with heavy duty stainless steel 304 case and bayonet style bezel
- Choice of temperature ranges, dial diameters and stem lengths
- Back entry, bottom entry or adjustable angle connections
- Recalibration screw (back connection and adjustable connection only)
- Stainless steel pockets can be supplied as extra. Use of a thermowell (pocket) is always recommended
- Silicone filling available

Applications:

- Wide range of applications including oil and gas, chemical and petrochemical, ventilation, heating and air conditioning, water/wastewater and general industrial processes

Standard product specifications:

Dial diameters	63mm, 100mm 115mm & 150mm
Design	BS EN 13190 / ASME B40.200 Compliant
Accuracy class	Class 1 (EN13190)
Ranges	-50 to +650°C&F
Case	Stainless steel AISI 304
Bezel	Stainless steel AISI 304 - bayonet
Connection	Stainless steel 316, size as requested
Stem	Stainless steel 316L
Stem length	min. 63mm, max. 1000mm
Stem diameter	6.3mm, 8mm, 10mm or 12mm
Sensor mechanism	Bimetal coil
Window	Glass (laminated safety glass optional)
Pointer	Black aluminium
Dial	Black numbering on white background
Filling	Dry or silicone filled (up to 300°C)
Protection	IP 67 or IP 68
Calibration	Certificate traceable to recognised national standard or statement of conformity, if required

Note:

Loosen the screws on either side of the adjustable bracket before gently angling thermometer as required. Tighten screws again before use. See notes on page 4 of this document.

Product data sheet

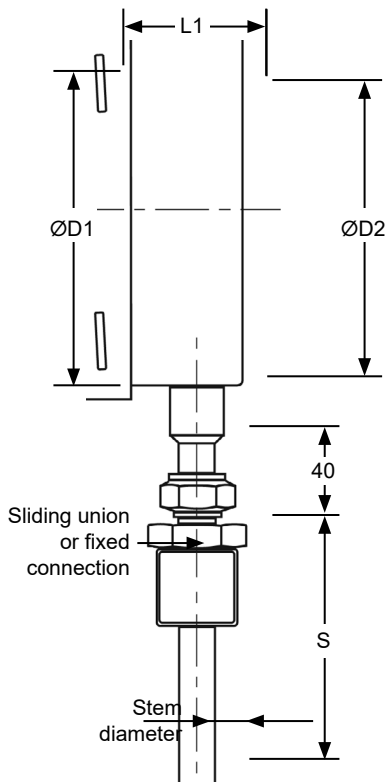
✉ sales@brannan.co.uk

☎ +44 (0)1946 816600

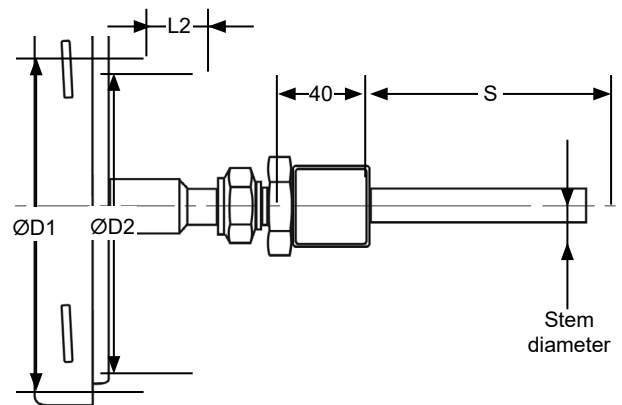
🌐 brannan.co.uk

Dimensions:

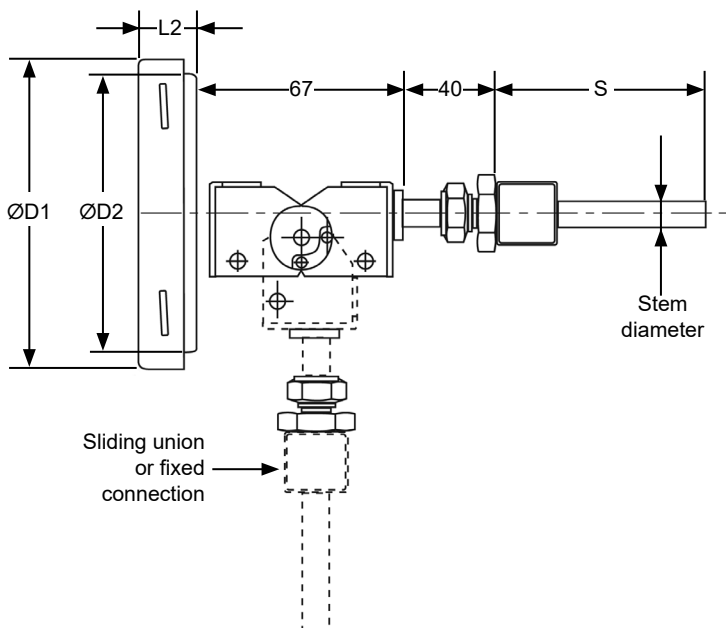
Bottom entry dial thermometer



Back entry dial thermometer



Adjustable dial thermometer



S = stem length

Dial size	ØD1	ØD2	L1	L2
63	68.6	61.6	42.5	21.5
100	109.0	98.5	49.0	23.5
115	126.5	114.5	49.0	23.5
150	166.0	152.0	49.0	25.0

Minimum sensing length for stem

Range °C	6.3mm	8mm	10mm	12mm
50	130	85	60	50
60	110	70	50	50
80	85	55	50	50
100	70	50	50	50
120	60	50	50	50
150	50	50	50	50
160	95	65	50	50
180	90	60	50	50
200	75	55	50	50
250	65	50	50	50
300	55	50	50	50
400+	50	50	50	50

Product data sheet

Product numbers:

All BT040 dials are ordered to specific customer specifications. Please use below matrix to create your unique ordering product reference, using the values in bold.

Make	Model	Dial dia.	Range		Units	Stem length	Stem dia.	Connection size/type	Filling	Connection orientation	Extras						
Brannan (BRN)	BT040 (BT40)	63mm (63)	°C:	°F:	°C outer / °F inner (CF)	63mm to 1000mm	6.3mm (6)	Plain stem (0)	Dry - no filling (D)	Bottom (BO)	Laminated safety glass (LG)						
			-50+150	-60+300				Fixed 1/2" BSP (7)									
			-50+100	-60+212				Fixed 1/2" NPT (8)									
			100mm (100)	-50+50				-60+120				°F outer / °C inner (FC)	8mm (8)	Fixed 3/8" BSP (5)	Silicone* (S)	Centre back (CB)	SS316L thermowell (TW316L)
			-40+40	-40+100				Fixed 3/8" NPT (6)									
			-40+60	-40+140				Fixed 1/4" BSP (3)									
		115mm (115)	-40+160	-40+320	°C only (C)	10mm (10)	Fixed 1/4" NPT (4)	Adjustable angle (AD)	Materials test certificate (MTC)								
		-30+50	-20+120	Fixed 1/4" BSP (3)													
		-30+70	-20+160	Fixed 1/4" NPT (4)													
		150mm (150)	-20+40	+0+100	°F only (F)		12mm (12)			Fixed 1/4" BSPT (10)	SS316 case material (C316)						
		-20+60	+0+140	Fixed 3/8" BSPT (11)													
		-20+180	+0+350	Fixed 1/2" BSPT (12)													
		-10+50	+10+120	Sliding union 1/2" BSP (S7)													
		-10+110	+10+230	Sliding union 1/2" NPT (S8)													
		0+50	+32+120	Sliding union 3/8" BSP (S5)													
		0+60	+32+140	Sliding union 3/8" NPT (S6)													
		0+80	+32+180	Sliding union 1/4" BSP (S3)													
		0+100	+32+212	Sliding union 1/4" NPT (S4)													
		0+120	+32+250	Sliding union 1/4" BSPT (S10)													
		0+150	+32+300	Sliding union 3/8" BSPT (S11)													
		0+160	+32+320	Sliding union 1/2" BSPT (S12)													
		0+200	+32+400														
		0+250	+32+500														
		0+300	+32+570														
0+400	+32+750																
0+450	+32+840																
0+500	+32+930																
0+550	+32+1000																
0+600	+32+1110																

NB. Others available on request

* Not for bottom entry. Max range up to 300°C. Max ambient temp 60°C

* Centre back and adjustable connection only for 63mm.

NB. When more than one extra is required, please separate each code with a hyphen when building your product reference

Order example:

Make	Model	Dial dia.	Range	Units	Stem length	Stem dia.	Connection size/type	Filling	Connection orientation	Extras
BRN	BT40	100	-50+150	CF	200	10	7	S	AD	LG-TW316L

Product reference: BRNBT40/100/-50+150/CF/200/10/7/S/AD/LG-TW316L

Calibration product numbers:

Calibration	No of points	Product number
Traceable to National Standards	1pt	49/099/0
	3pt	49/101/0
	4pt	49/104/0
	5pt	49/105/0

Product data sheet

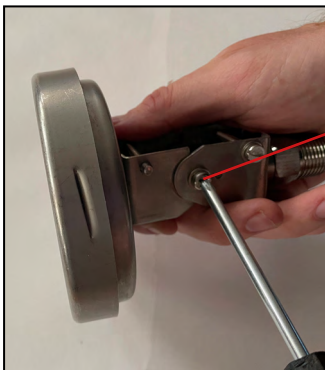
✉ sales@brannan.co.uk

☎ +44 (0)1946 816600

🌐 brannan.co.uk

Please read before attempting to change angle of adjustable angle bimetal thermometers.

Setting the connection angle



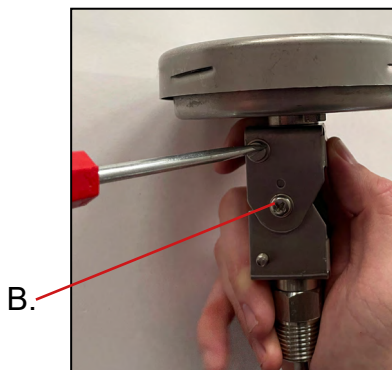
To adjust the thermometer face display angle, firstly, loosen off screws A. on either side of the adjustable bracket.



Set the thermometer face to the required angle. Retighten the screws.

Face alignment

Before rotating the thermometer face ensure the thermometer is set in the back connection alignment. Never rotate the thermometer face when the bracket is set in an angled alignment.



Loosen off the screws B. on either side of the adjustable bracket.



Holding both the thermometer face and the adjustable bracket, rotate the thermometer face to the desired position. No more than minimum force should be required. Retighten the screw(s).